

Research on the Application of GIS-based Measures in the Advancement of the CPMS

Hyun Ok, Seong-Jin Kim, Jin-Uk Kim, Young-Jin Kim

ICT Convergence and Integration Research
Korea Institute of Civil Engineering and Building Technology, KICT
Goyang-si, Gyeonggi-do, Korea
{okhyun, sjkim72, jukim, yjkim73}@kict.re.kr

Abstract—The Construction Project Information System (CPIS) is an information system constructed as part of the Construction Continuous Acquisition & Life-cycle Support (CALS) of the Ministry of Land, Infrastructure, and Transport (MOLIT). As such, CPIS aims to digitize construction projects across all stages, improve the construction project implementation procedures, and enable sharing and exchange of information so as to enhance the productivity and efficiency of construction projects and secure their transparent administration. CPIS consists of five information systems--construction project management, facility maintenance, construction approval, land compensation, and construction project information portal systems. Of these, the Construction Project Management System (CPMS), one of MOLIT's internal work systems, is designed to enable ordering agencies and constructors (designers, builders, and supervisors) to share documents, drawings, and other various information created across the entire process of road and river construction projects, and to process works online. CPMS, now over 10 years old after its construction, focuses on work processing functions and data management. Thus, CPMS's construction project information consists chiefly of text and documents, and makes it impossible to link with visualization-based Geographic Information System (GIS), thereby limiting its sharing and dissemination and the determination of the overall construction project situations. This paper examines domestic and overseas GIS technology trends and relevant information systems, analyzes the CPMS status and problems, and presents GIS application measures to advance CPMS. Thus, this study seeks to link text-information-based and documents-based construction projects information with GIS to assist in determining the total situation information and in decision-making, and to provide diverse statistics and analyzed information.

Keywords—CALS; CPIS; CPMS; GIS; MOLIT

INTRODUCTION

The Construction Project Information System (CPIS) is an information system constructed as part of the Construction Continuous Acquisition & Life-cycle Support (CALS) of the Ministry of Land, Infrastructure, and Transport (MOLIT). CALS is a total information system designed to enable ordering agencies, relevant companies, etc. to exchange and share the information created across the entire process of construction project planning, design,

execution, and maintenance through computer networks. Thus, CALS aims to digitize all construction project stages, improve the construction project implementation procedures, and enable sharing and exchange of information, so as to enhance the productivity and efficiency of construction projects and secure their transparent administration. CPIS consists of five information systems--construction project management, facility maintenance, construction approval, land compensation, and construction project information portal systems.

Of these, the Construction Project Management System (CPMS), one of MOLIT's internal work systems, is designed to help ordering agencies and constructors (designers, builders, and supervisors) share documents, drawings, and other various information created across the entire process of road and river construction projects and to process works online.

CPMS, now over 10 years old after its construction, focuses on work processing functions and data management. Thus, its construction project information consists chiefly of text and documents, which makes it impossible to link with visualization-based Geographic Information Systems (GIS), thereby limiting its sharing and dissemination and the determination of the overall construction project situations.

This paper examines domestic and overseas GIS technology trends and relevant information systems, analyzes the CPMS status and problems, and presents GIS application measures to advance CPMS. Thus, this study seeks to link the text-information-based and documents-based construction projects information with GIS to assist in determining the total situation information and in decision-making, and to provide diverse statistics and analyzed information.

PRELIMINARIES

A. Analysis of Domestic and Overseas GIS Technology Trends

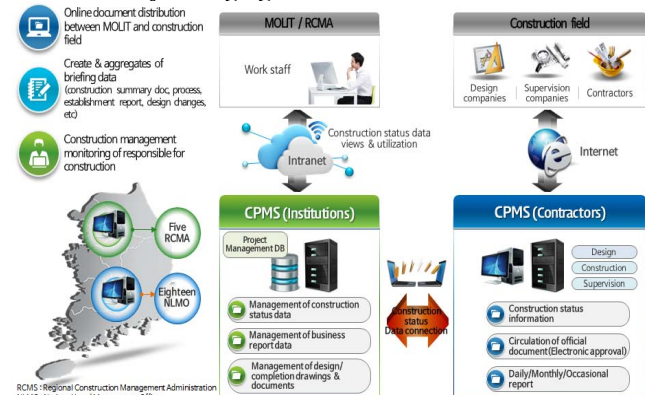
For the domestic GIS technology trends, in accordance with the 1995 First Master Plan for the Construction of a National Geographic Information System (NGIS), the NGIS project was pursued. Currently, in accordance with the Fifth National GIS Policy, seven major strategies and 27 detailed tasks were announced and are now being implemented. Domestically, the government and public agencies positively

Abroad, governments provide open-type standards, open GIS to the private sector, and transfer GIS to the private sector, thereby ensuring the efficiency and reliability of GIS construction. In the USA, at the state level, the Federal Geographic Data Committee (FGDC) undertakes the construction of GIS infrastructure, with the participation of 19 public agencies, including the Defense Department and other government departments, and agencies under their control. To facilitate the dissemination of the constructed GIS, FGDC operates a one-stop service site and is currently disseminating 130,000 types of GIS data. The U.K., led by the public agency Ordnance Survey, produces and disseminates road network maps, topographic maps, and tourist maps covering nationwide areas, and conducts relevant studies.

B. Analysis of the GIS Status

C. Analysis of the CPMS Status

CPMS consists of the system for agencies and the system for contracts. The CPMS for agencies is designed to systematically support the availability of construction work information, including the construction work status and contracts, to identify work reports and statistical data in real time so as to support efficient project management and decision-making by ordering agencies. The system for contracts is designed to distribute online various official letters and design documents between construction sites (builders, supervisors, and designers) and ordering agencies in all construction stages, from the commencement to the completion of the construction, and to formulate various reports online, thereby shortening the work handling time and efficiently managing construction works.



CPMS, which has been constructed and operated with focus on MOLIT's works, has boosted work efficiency, but it should be advanced by adopting GIS, Building Information Modeling (BIM), and the convergence and combination of mobile and big data as well as other state-of-the-art information technologies. Towards that end, this study provides the total status of construction project information and the diverse statistics and analyzed data, and objectively analyzes these information to support decision-making.

D. GIS Application Measures in CPMS

345

In Stage 2, WBS and BIM are applied to CPMS to automatically link the system with design drawings, etc. so as to visualize the information. Furthermore, WBS is linked to express the facility and earth work progress rate status in charts, and to express the progress rates and execution rates by work type, segment, and facility on the GIS map in graphics.

First, GIS is to be applied to the initial CPMS screen to check various statistical information on construction work sites and approval rates, and to acquire detailed information on construction works by selecting map information.



Figure 2. Initial CPMS screen

Next, the total screen for national roads divides the entire nation into five regions and is designed to inquire on the total process rate, construction cost spending rate, and total project status. Also, all construction work site locations are put together on the GIS-based map to inquire on the construction work status according to the routes of national roads so as to express the details of the construction work status and its characteristics by route.

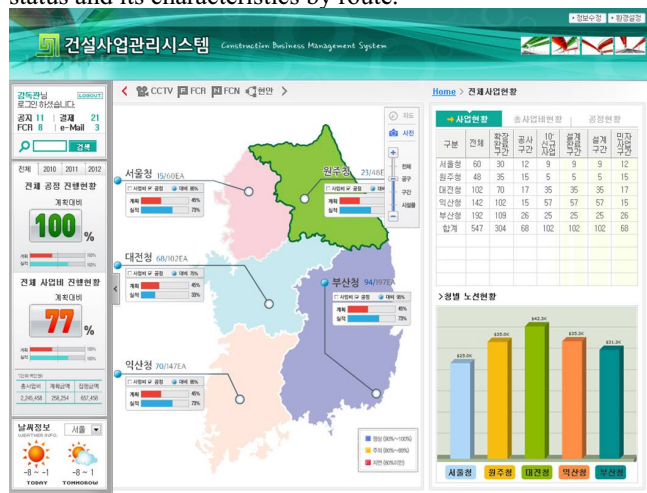


Figure 3. Overall national roads screen

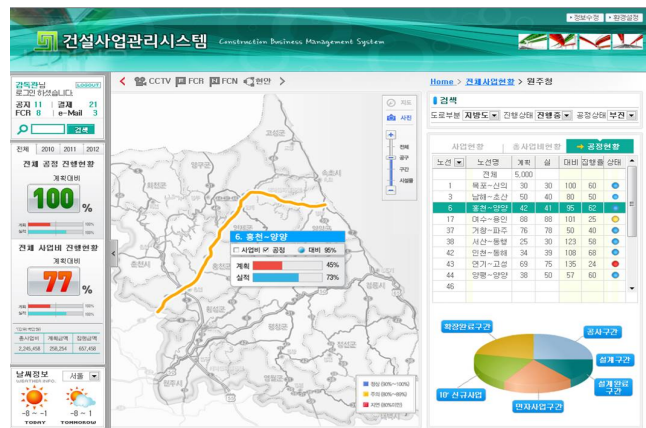


Figure 4. National road status screen by route

The system is to be designed to inquire on the construction work information and facility information by construction segment in each construction site on the GIS electronic map, and to express the plan versus the result progress ratio, progress by construction segment, photos, etc. Also, the system is to be designed to link WBS with the GIS electronic map based on the builder's 3D design drawing files to illustrate and visualize the facility construction progress for the review of the overall progress by work type and process.



Figure 5. Status screen by construction site

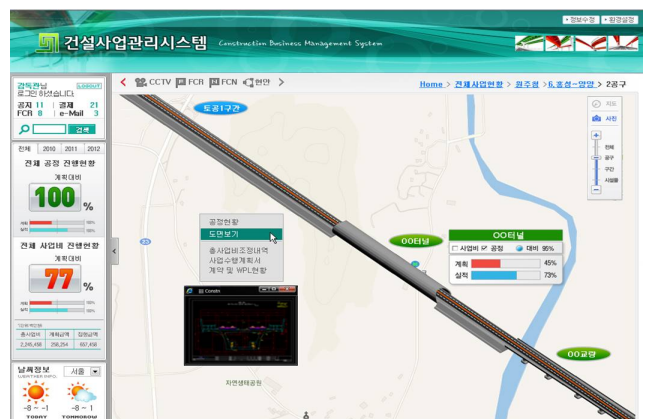


Figure 6. WBS and GIS applied detailed screen

The planned CPMS architecture consists of six layers--the interface layer, application layer, data layer, management layer, interface layer, and infrastructure layer.

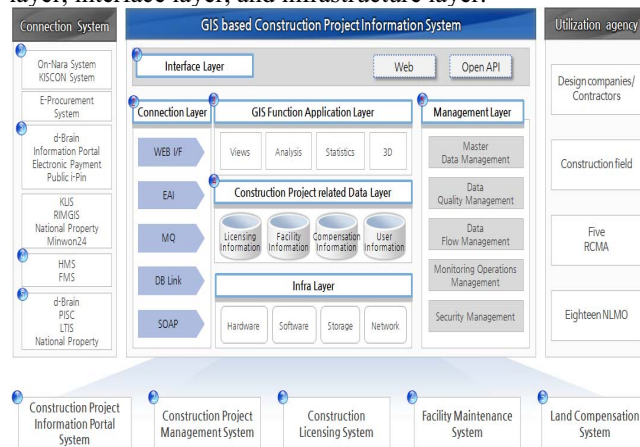


Figure 7. CPIS architecture

The six layers consist of the interface layer designed for interfacing with the linkage systems, the application layer designed for performing the GIS function, the data layer designed for storing data on the construction work database, the management layer designed for managing the data, and the physical infrastructure layer designed for communicating with users of the agencies.

CONCLUSION

As one of MOLIT's work systems, CPIS has long been operated, but needs to adopt GIS to be aligned with the government's GIS policy or to synergize with other fields. This requirement is imperative to upgrade the functions and future information value of the system.

This study examined domestic and overseas GIS technology trends and relevant information systems, analyzed the major status and problems of CPMS, and proposed GIS application measures for upgrading CPMS.

These efforts are expected to transform the system from a monotonous user interface to a user-friendly GIS function interface so as to boost user convenience and shorten the work-handling time, and thereby expand the work efficiency

REFERENCES

- [1] MOLIT, 13 Construction CALS System Operation and Function Improvement (I) and (II) Final Report, KICT, 2014.
- [2] MOLIT, 14 CPIS Operation and Function Improvement (I) and (II) Final Report, KICT, 2014.
- [3] MOLIT, Fifth Master Plan for National GIS Policy, MOLIT, 2013.
- [4] CPIPS(Construction Project Information Portal System), <http://www.calspia.go.kr>
- [5] MOLIT, <http://www.molit.go.kr>
- [6] US FGDC, <http://www.fgdc.gov>
- [7] US federal government data total storage location, <http://www.data.gov>
- [8] The UK Ordnance Survey, <http://www.ordnancesurvey.co.uk>